



ALUMINIUM & PVC SYSTEM

WWW.VGKGROUP.COM



WHO WE ARE

VGK is a manufacturing company of Aluminum & Pvc doors and windows systems. With our expertise and our 26 years of experience we have gained customers all over the world. We have in our disposal a field of 12.000 sqm which the 2.500 sqm are the offices and the production unit. Our production is equipped with latest technology machines and a staff of yearly experience. After a big research we choose the best companies for our partners in the field of Aluminum, of Pvc and of accessories .Our customers can choose our big range of door designs that we have in aluminum and pvc and we are also open discuss to produce something especial for them. Our target all of these years is to find customers for long lasting cooperation and we from our side try our best everyday with our technical support, our quality, our good transportation conditions and with our economy prices. We can produce all types of doors and windows like balcony doors, French doors, exterior doors with panels, exterior doors with glasses, single or double windows (sliding & opening) arch windows and doors etc. Contact with our company today make and good use of our products and services that we can provide to you.





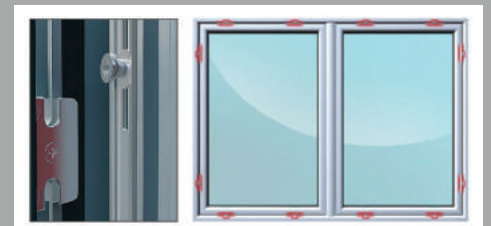
ALBIO 101C

DESCRIPTION:

Albio 101 C offers a great variety of profiles, suitable for every possible construction. The system offers an oval shaped profile pattern and the ability of multiple locking mechanism application.

APPLICATIONS:

Doors, windows and shop fronts. Fixed, tilt & turn, etc.



TECHNICAL CHARACTERISTICS

01	Aluminum Alloy	EN AW 6063T6, EN 15088:2005
02	Powder coating	According to the European standard Qualicoat
03	Anodising	According to the European standard Qualanod
04	Tolerance	EN 12020-2
05	Gaskets	EPDM / EPDM Foam
06	Chamber	Compatible with multiple locking mechanisms
07	Glazing Thickness	5-32mm
12	Frame dimensions	Width 51.8-180mm, height 68.3mm
14	Sash dimensions	Width 51.8-61.8mm, height 72-117mm
15	Air Permeability	Double sash window 1.40m X 2.20m: Class 4 (EN 1026:2000 / EN 12207:2000), Single sash window 1.00m X 2.22m: Class 4 (EN 1026:2000 / EN 12207:2000)
16	Water Tightness	Double sash window 1.40m X 2.20m: Class E750 (EN 1027:2000 / EN 12208:2000), Single sash window 1.00m X 2.22m: Class 8A (EN 1027:2000 / EN 12208:2000)
24	Resistance to wind load	Double sash window 1.40m X 2.20m: Class C4 (EN 12211:2000 / EN 12210:2000), Single sash window 1.00m X 2.22m: Class C4 (EN 12211:2000 / EN 12210:2000)



ALBIO 109C

DESCRIPTION:

Albio 109C was designed taking into account the latest technological achievements in window system design. It has accomplished high performance on thermal insulation due to its 24mm width polyamide profiles. The excellent air-permeability test results and the ability of using up to 44mm thick glazing units offer high sound insulation. The use of perimeter multi-locking mechanism in combination with thermal break insulation, makes Albio 109C an absolutely secure system. The system also includes two different profile patterns, oval and classic.



APPLICATIONS:

Doors, windows and shop fronts. Fixed, tilt & turn, etc.

TECHNICAL CHARACTERISTICS

01	Aluminum Alloy	EN AW 6060T6, EN 15088:2005
02	Powder coating	According to the European standard Qualicoat
03	Anodising	According to the European standard Qualanod
04	Tolerance	EN 12020-2
05	Gaskets	EPDM/EPDM Foam
06	Chamber	Compatible with multiple locking mechanisms
07	Glazing Thickness	17-38mm
10	Thermal- Break	24mm (PA 6.6, 25%GF)
11	Thermal transmittance coefficient	2.2 – 2.8 W/(m ² K) (EN 10077-2:2003-10)
12	Frame dimensions	Width 72.7-100mm, height 53.1-70 mm
14	Sash dimensions	Width 75.7mm, height 82.1-96mm
15	Air Permeability	Double sash window 1.40m X 2.20m: Class 4 (EN 1026:2000 / EN 12207:2000), Single sash window 1.00m X 2.20m: Class 4 (EN 1026:2000 / EN 12207:2000)
16	Water Tightness	Double sash window 1.40m X 2.20m: Class E1050 (EN 1027:2000 / EN 12208:2000), Single sash window 1.00m X 2.20m: Class 8A (EN 1027:2000 / EN 12208:2000)
24	Resistance to wind load	Double sash window 1.40m X 2.20m: Class C4 (EN 12211:2000 / EN 12210:2000), Single sash window 1.00m X 2.20m: Class C4 (EN 12211:2000 / EN 12210:2000)



ALBIO 109C SUPER THERMO

DESCRIPTION:

Albio 109C Super Thermo is Vgk top class product within opening systems in terms of thermal insulation. The extremely low thermal transmittance coefficient has been achieved by using wider polyamide profiles (34mm), the insertion of new high insulation material and the use of new gaskets. The excellent air permeability test results and the ability of using up to 50mm thick glazing units offer high sound insulation. The system includes high security mechanism, known as perimeter multi-locking mechanism.

APPLICATIONS:

Doors, windows and shop fronts. Fixed, tilt & turn etc.

TECHNICAL CHARACTERISTICS

01	Aluminum Alloy	EN AW 6060T6, EN 15088:2005
02	Powder coating	According to the European standard Qualicoat
03	Anodising	According to the European standard Qualanod
04	Tolerance	EN 12020-2
05	Gaskets	EPDM / EPDM Foam
06	Chamber	Compatible with multiple locking mechanisms
07	Glazing Thickness	26-64mm
10	Thermal- Break	34mm (PA 6.6, 25%GF)
11	Thermal transmittance coefficient	1.5 – 2.0 W/(m ² K) (EN 10077-2:2003-10)
12	Frame dimensions	Width 82.7-100mm, height 53.1-70 mm
14	Sash dimensions	Width 85.7mm, height 74.3-96.1mm
15	Air Permeability	Double sash window 1.40m X 2.20m: Class 4 (EN 1026:2000 / EN 12207:2000)
16	Water Tightness	Double sash window 1.40m X 2.20m: Class E750 (EN 1027:2000 / EN 12208:2000)
24	Resistance to wind load	Double sash window 1.40m X 2.20m: Class C4 (EN 12211:2000 / EN 12210:2000)



EL-56 THERMIC I2

DESCRIPTION:

It covers the particular needs of architects, with exceptional level of watertightness and wind pressure until 450 Pa for certified double sash frame in the largest dimensions 2.33m x 2.33m (10 Beaufort storm with 89-102 km/h wind speed, causing important damage). Excellent thermal insulation and sound reduction. Certified burglary resistance of WK2 category.

TECHNICAL CHARACTERISTICS

- Optimized foam filled insulation zone (I2 technology) that ensures excellent isothermal flow of the window
- Firm thermal insulating system
- It is recommended for large frames
- Certified at the Ift Rosenheim institute in the largest dimensions (2.33m x 2.33m)
- Thermal transmittance rate $U_f = 1,8-2,4 \text{ W/(m}^2\text{K)}$
- High level of thermal insulation with 22mm glass-fibre reinforced polyamide
- Certified burglar resistance WK2 (Ifi Rosenheim)
- Internal joint corner with set up holes for the hinges for optimal stabilization
- High level of insulation thanks to the use of EPDM sealing gaskets
- Water tightness: 900 Pa in single sash with fixed sub-light (13 Beaufort cyclone)
- Air permeability: category 4, which is the highest one
- Available in linear and curvy shapes

PROFILES DIMENSIONS CHARACTERISTICS

01	Frame dimensions	Width 66,9 mm, 75,2 mm, 100,6 mm, 104 mm, 125 mm, 180 mm - Height 56,3 mm 69 mm <small>KdL 76,5 mm.</small>
02	Sash dimensions	Width 75,2 mm - Height 79,9 mm, 101 mm.

CONSTRUCTIONS DIMENSIONS SPECIFICATIONS

01	Maximum sash dimensions	Width 1350 mm - Height 2350 mm	03	Maximum sash weight	90 Kg
02	Minimum sash dimensions	Width 310 mm - Height 400 mm	04	Glass thickness	10 mm to 48 mm



ALBIO 225

DESCRIPTION:

Albio 225 offers high insulation performance thanks to the thermal-breaking system, even on intense weather conditions. The sash and frame profiles come with 24mm polyamide bars. With 38mm sash width, the system offers excellent thermal insulation. A special feature of the system is the option of embedding a stainless steel rail into the frame profile for great functionality and durability. Its design includes two different patterns, flat and oval.

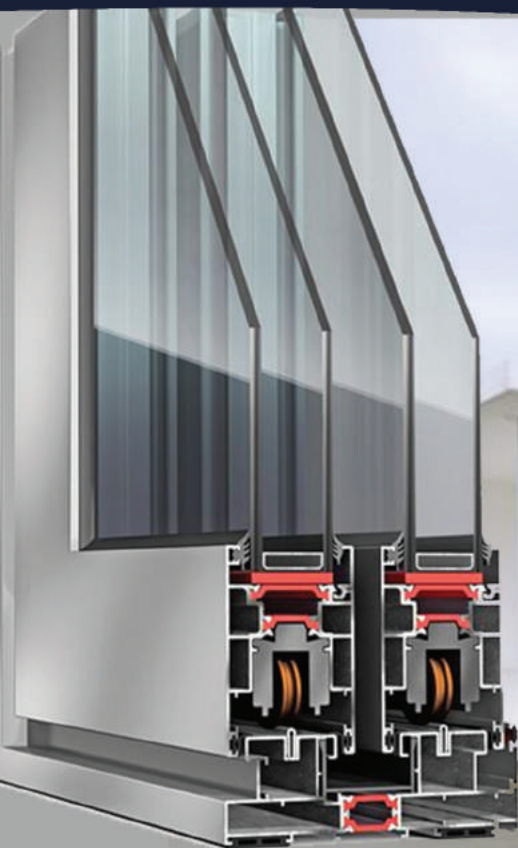
APPLICATIONS:

Windows, balcony doors, successive or built-in, etc.

TECHNICAL CHARACTERISTICS

01	Aluminum Alloy	EN AW 6060T6, EN 15088:2005
02	Powder coating	According to the European standard Qualicoat
03	Anodising	According to the European standard Qualanod
04	Tolerance	EN 12020-2
05	Gaskets	EPDM
06	Scroll Guide	Stainless steel, polyamide
07	Glazing Thickness	5-22mm
10	Thermal- Break	24mm (PA 6.6, 25%GF)
11	Thermal transmittan cecoefficient	3.1 – 5.1 W/(m ² K) (EN 10077-2:2003-10)
12	Frame dimensions	-----
14	Sash dimensions	Width 38mm, height 97mm
15	Air Permeability	Specimen dimensions: 1.40m X 2.20m: Class 3 (EN 1026:2000 / EN 12207:2000)
16	Water Tightness	Specimen dimensions: 1.40m X 2.20m: Class 4A (EN 1027:2000 / EN 12208:2000)
24	Resistance to wind load	Specimen dimensions: 1.40m X 2.20m: Class C4 (EN 12211:2000 / EN 12210:2000)





ALBIO 235

DESCRIPTION:

Albio 235 is ideal for wide opening applications, having profiles with great endurance and high moment of inertia. The system presents excellent thermal-insulation properties thanks to the 24-34mm polyamides and special multi-chambered PVC add-ons. Moreover, the system offers water-tightness through EPDM sealing gaskets and its special lift & slide railing mechanism. These fittings give the possibility of using large and thick glazing units, with a capacity that can reach up to 200kg sash weight.



TECHNICAL CHARACTERISTICS

01	Aluminum Alloy	EN AW 6060T6, EN 15088:2005
02	Powder coating	According to the European standard Qualicoat
03	Anodising	According to the European standard Qualanod
04	Tolerance	EN 12020-2
05	Gaskets	EPDM
06	Scroll Guide	Stainless steel, polyamide
07	Glazing Thickness	24mm & 36mm
10	Thermal- Break	12mm, 24mm, 34mm (PA 6.6, 25%GF)
11	Thermal transmittan cecoefficient	3.6 – 6.8 W/(m2K) (EN 10077-2:2003-10)
12	Lift & slide fitting:	GU-937/957
14	Sash dimensions	Width 56mm, height 84.5mm
15	Air Permeability	Specimen dimensions: 2.10m X 2.20m: Class 4 (EN 1026:2000 / EN 12207:2000)
16	Water Tightness	Specimen dimensions: 2.10m X 2.20m: Class 7A (EN 1027:2000 / EN 12208:2000)
24	Resistance to wind load	Specimen dimensions: 2.10m X 2.20m: Class C4 (EN 12211:2000 / EN 12210:2000)



ORAMA MINIMAL FRAME

DESCRIPTION:

VGK presents the new ORAMA system, which provides minimal and flawless architectural aesthetic, upgrading your living space. ORAMA is a detail-focused innovative system of great quality, that brings efficiency and modern elegance in balance.

- The thickness of the maximum visible vertical surface is only 3cm.
- All sliding typologies are available including single, double, and triple track systems as well as corner-free solutions that open your vision to 360 degrees.
- The high capacity stainless steel rollers and tracks allow smooth sliding action and extreme ease of movement with large glass areas.
- Concealed electric drives and locks can be used to increase operating comfort and to increase the security level of the opening.
- The high-quality multi-locking point system developed by ORAMA offers the best possible burglar resistance in accordance with European standards





PVC ARCADE 71MM

DESCRIPTION:

SYSTEM ARCADE - A well-engineered window profile system that boasts quality features and an excellent cost/benefit ratio to meet all standard requirements for contemporary living. Boasting a clear, slender form and a high level of functionality the window system Elite and Arcade offers a profile depth of 71 mm to award windows high-stability and good thermal insulation. This all-round profile also allows builders and contractors with a restricted budget to benefit from a high-quality solution for contemporary building.

TECHNICAL CHARACTERISTICS

- 71 mm system, 5 chambers
- Frame insulation value $U_f = 1.3 \text{ W/m}^2\text{K}$
- The insulation value of the entire window U_w up to $0.77 \text{ W/m}^2\text{K}$ even exceeds the expected values of the Regulation EnEV 2012 ($U_w \leq 0.95 \text{ W/m}^2\text{K}$). Eligible for KfW financial support (German Reconstruction Loan Corporation)
- Elite: Offset sashes, 45° bevels / Arcade: semi-offset and offset sashes, 20° bevels
- Accommodates glazing with a thickness of up to 47 mm for thermal or acoustic insulation
- Inner 2-foot glazing bead for enhanced burglary protection
- Two framed weldable TPE seals
- Soundproofing up to 44 dB (noise protection class 4)
- 40 different laminated foil colours for Elite, 35 for Arcade



PVC PRESTIGE 76MM

DESCRIPTION:

SYSTEM PRESTIGE - A high quality window profile that delivers an excellent balance between ecology, design and functionality and meets the high standard of today's modern building requirements.

Harmonised design combined with a high level of functionality such as excellent sound insulation and very good thermal insulation values fully satisfy the latest requirements of the Energy Saving Regulation and the values required for entitlement to KfW financial support (German Reconstruction Loan Corporation). Using the state-of-the-art 6-chamber technology and a profile depth of 76 mm you can benefit from great energy savings and substantially reduce heating costs. Compared to standard windows with single glazing Inoutic windows with their high quality insulated glass can reduce heating costs by up to 40 %.

TECHNICAL CHARACTERISTICS

- 76 mm system, 6 chambers
- Frame insulation value $U_f = 1.1 \text{ W/m}^2\text{K}$ with centre seal or $U_f = 1.2 \text{ W/m}^2\text{K}$ with rebate seal
- Insulation value of entire window U_w up to $0.69 \text{ W/m}^2\text{K}$ – this even exceeds the expected required values of the Energy Saving Regulation EnEV for 2012 ($U_w \leq 0.95 \text{ W/m}^2\text{K}$). Eligible for financial support through the KfW German Reconstruction Load Corporation.
- Also with Thermo Profile made from recycled material for enhanced thermal insulation
- Curves and 20° bevels ensure a good water run-off and harmonic design
- 3 different sash designs available
- Accommodates glazing thickness of up to 44 mm for thermal and acoustic insulation
- Inner 2-foot glass bead for enhanced burglary protection
- Glass rebate height of 25 mm for avoidance of condensation water
- Three framed weldable TPE seals with centre sealing system, two with rebate seal system
- RAL-certified overlap bonding for floor-to-ceiling elements of up to 2.60 m
- Soundproofing up to 47 dB (noise protection class 5)
- 40 different laminated foil colours
- Prestige classic offset, also available with aluminium cladding – unlimited choice of colours



KBE 70MM SYSTEM

DESCRIPTION:

You should not compromise in your choice of windows. Safety and comfort are the maxims of our living standards today. KBE System_70mm windows offer you solutions with added value. They are designed as state of the art integrated solutions and also provide many possibilities for individual design.

EFFICIENCY

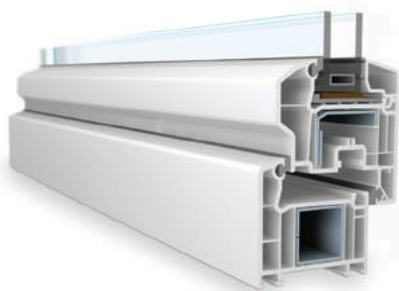
KBE System_70mm helps you to save heating costs to a measurable extent and raise the cosiness in your home. Featuring innovative five chamber technology and a larger installation depth, KBE System_70mm offers a perceptible thermal insulation. This also makes it ideal for thicker sound insulation glazing that better absorbs noise from outside.

SAFETY

The 70 mm installation depth and the 13 mm distance between axes offer considerable protection against forced entry. The larger installation depth can take thicker glazing, making it even more difficult to lever up the window. Moreover, these window systems can take security hardware that can be installed more deeply in the frame than usual.

TECHNICAL CHARACTERISTICS

- 70 mm installation depth for enhanced thermal insulation
- 5-chamber technology
- Modern design
- Various woodgrain foils and colors
- Minimum storage for maximum economy
- Deeper glass rebate for additional security and enhanced thermal and sound insulation
- 13 mm Eurogroove position for greater security
- improved statics
- optimized isotherm paths
- optimized installation
- Enhanced thermal insulation: U f value 1.3 W/m²K



VEKA SYSTEM

THE VEKA SYSTEM WITH THE CLASSIC DESIGN

- Slightly rounded contours give the SOFTLINE system its classic look
- Best thermal insulation of up to $U_w = 1,0 \text{ W/m}^2 \text{ K}$, depending on the type of glazing, significantly reduces heating costs
- High-quality gaskets in elegant grey – the twin seal gaskets reliably keeps cold, draughts and damp at bay
- Galvanized metal reinforcement in accordance with VEKA reinforcement guidelines guarantee stability and long-lasting functionality
- 5-chamber profile with 70 mm standard installation depth makes optimum use of the insulating effect of air

PROFILE SYSTEM

- Elegant, slightly rounded edges
- 5-chamber profiles with a standard installation depth of 70 mm
- Wall thickness of 3 mm in accordance with RAL standards
- Style options: recessed or semi-recessed external surface
- Visible surface: 118–131 mm
- Steel reinforcements in accordance with VEKA reinforcement guidelines
- Applications and functionality
- Standard windows, thermal insulation and sound insulation windows, safety windows, sliding elements, French windows
- Tilt-turn, casement, hopper and French casement windows and parallel tilt-and-slide doors with single or multiple casements, fixed or combinable, glazing to DIN 18361
- Quality assurance
- Certified member of GKFP, the German quality assurance association for uPVC window profiles
- Quality testing according to the RAL quality mark for uPVC windows

PHYSICAL PROPERTIES

- Thermal insulation to DIN 4108 and German regulations for energy conservation, EnEV
- Sound insulation to VDI 2719 SSK, sound transmission classes II to V
- Burglary resistant according to DIN V ENV 1627–1630, up to resistance class 2
- Heat transfer coefficient of window elements (Depending on type of glazing)
- With warm edge: up to $1,0 \text{ W/m}^2 \text{ K}$
- With aluminum edge: up to $1,1 \text{ W/m}^2 \text{ K}$
- Gasket system
- Gasket around sash and outer frame
- 2 seal levels with high-quality material
- Elegant grey as standard color Glazing rebate
- Insertion depth: 24 mm
- Thickness of pane (in the standard combination of sash/ outer frame) combined with rounded glazing bead: 24–36 mm
- Thickness of pane (in the standard combination of sash/ outer frame) combined with other glazing beads from the VEKA system range: 14–42 mm
- Hardware in accordance with DIN 18357
- Compatible with system-tested, quality assured hardware
- Free choice of handles Accessories
- Panel profiles, extensions, window sill connections, wall connections, couplings, additional reinforcements, ventilation, cover profiles

MOSQUITO NET

DESCRIPTION:

Combining the elegance and serenity, we cover your needs with all types of mosquito Net protection.

VERTICAL MOTION

- Recommended for Windows and doors
- Applicability to all types of frames
- Paint feature in all colors
- With spring return
- Also available with brake reset
- Opening and closing is easily done even by children or elderly

HORIZONTAL MOTION

- Recommended for Windows and doors
- Applicability to all types of frames
- Paint feature in all colors
- With spring return
- Opening and closing is easily done even by children or elderly
- Available in one leaf and double leaf

PLISSE

- Recommended for doors
- It has horizontal movement
- Without spring return, with track mechanism
- Without a guide down for free passage and ease in cleaning the floor
- Openings up to 6 meters
- Remove the winter and repositioning in the summer
- Opening and closing is easily done even by children or elderly
- Paint feature in all colors
- Available in one leaf and double leaf

PIETTA

- Recommended for doors
- It has horizontal movement
- With lanyard that protects from the wind
- The wire is available in black and grey
- Without spring return
- Opening and closing is easily done even by children or elderly
- Paint feature in all colors
- Available in one leaf and double leaf



MOSQUITO NET

DESCRIPTION:

Combining the elegance and serenity, we cover your needs with all types of mosquito Net protection.

OPENING

- Recommended for endrances
- Close with magnet or brush (spring reset capability)
- Ability construction panel at the bottom
- Remove the winter and repositioning in the summer
- Opening and closing is easily done even by children or elderly
- Paint feature in all colors
- Repaired the wire

SLIDING

- Recommended for Windows and doors
- Has its own guide
- Available in one leaf and double leaf (sliding)
- Remove the winter and repositioning in the summer
- Paint feature in all colors
- Opening and closing is easily done even by children or elderly
- Repaired the wire

SLIDING (TILT OR IN WALL)

- Recommended for Windows and doors
- Remove the winter and repositioning in the summer
- Paint feature in all colors
- Opening and closing is easily done even by children or elderly
- Repaired the wire

STABLE

- Recommended for small openings (w.c.), where external access is not necessary
- Paint feature in all colors
- Accepts simple wire or wire aluminum for greater strength
- Repaired the wire





SOME OF OUR P



PROJECT PHOTO



HEAD OFFICE: GREECE – XANTHI

WEB: WWW.VGKGROUP.COM

EMAIL: GK@VGKGROUP.COM

PHONE: + 30 25410 84182

FAX: + 30 25410 84184

ADDRESS : LEFKI 67100

SKYPE ID: VIEXAL2

